

# HYDRO SYSTEMS

HOSPITALITY, BOUTIQUE HOTELS, SPAS

Transforming the bath through the power of water since 1978







# IF YOU CAN DREAM IT, WE CAN BUILD IT.

For more than four decades, Hydro Systems has crafted bespoke bathing solutions for hospitality and commercial properties. From freestanding soaking vessels to custom hydrotherapy tubs and various specialty products, Hydro Systems can take any sketch, idea or vision and transform it into a reality. Creativity and imagination are welcomed and encouraged.

H | S





# WHY CHOOSE HYDRO SYSTEMS

## **MADE IN U.S.A.**

Every Hydro Systems product is made entirely in the U.S.A., using the finest quality materials sourced within the U.S. and crafted by skilled artisans and engineers.

## **CRAFTSMANSHIP & INNOVATION**

Hydro Systems is always at the forefront of using the newest materials, manufacturing processes, and state-of-the-art technologies that enhance product performance and precision, while helping shorten lead times and projects stay on budget.

## **MATERIALITY**

Integrity of craftsmanship and quality of materials runs deep at Hydro Systems. The company uses extra thick acrylic and solid surface materials sourced from the U.S. for structural integrity and stability. The HydroLuxe SS™ line of solid surface vessels, crafted from a proprietary blend of ground natural minerals and the best in man-made composites, represents the latest in eco-friendly performance and commercial-level durability meant to stand the test of time.

## **CUSTOM ARTISTRY**

Hydro Systems is known for crafting bespoke bathing systems that double as works of art and instruments of healing.

## **GREEN MANUFACTURING**

Hydro Systems uses responsible, sustainable practices to power its bi-coastal manufacturing facilities and lower its carbon footprint for manufacturing, packaging, and transporting all products.

## **PERSONALIZED CARE & SUPPORT**

Hydro Systems has a dedicated project team that helps designers, architects, hotel property owners and commercial developers bring their inspirations to life and assists them with product quotations, installations or any design challenges that may arise during the project.



# WELL-CRAFTED WELL-BEING

The daily ritual of bathing should be anything but ordinary. This core belief forms the undercurrent of Hydro Systems, a third-generation family-run business founded in 1978. With two state-of-the-art manufacturing facilities in Valencia, California and McDonough, Georgia, Hydro Systems creates bathing systems that are not only powerful instruments of personal healing, but singular works of art.

The innovators and creators behind Hydro Systems share a passion for quality, originality, attention to detail and technological innovation. Using the ancient four elements—heat, light, color, and oxygen—they can transform the simple flow of water into hydrotherapy that touches all of the senses. Clients' visions for wellness in the hotel bath are the elements that inspire Hydro Systems to keep refining – and redefining – what it means to experience “well-crafted well-being” through one-of-a-kind hotel bath creations and customizations. Water has the power to transform, and so should the bath.



# CUSTOM SOLUTIONS FOR EVERY BUILT ENVIRONMENT

Hydro Systems saves you from costly retrofits by accommodating as-built design specifications.

Every hospitality environment is different, requiring a unique bath solution. Hydro Systems works tirelessly to meet all hospitality and commercial clients' specifications and budgets – whether it's offering a full range of turnkey bathtubs and shower pans, or assisting with completely custom projects dreamed up by you or your design team.

The innovators and creators behind Hydro Systems share a passion for originality, constantly imagining new ways of elevating the bath experience. They bring all of that design creativity to custom projects and combine it with decades of technical experience – so you can achieve your creative vision on budget and on time. Their customization experience extends from completely bespoke creations and new build projects to retrofits and renovations.



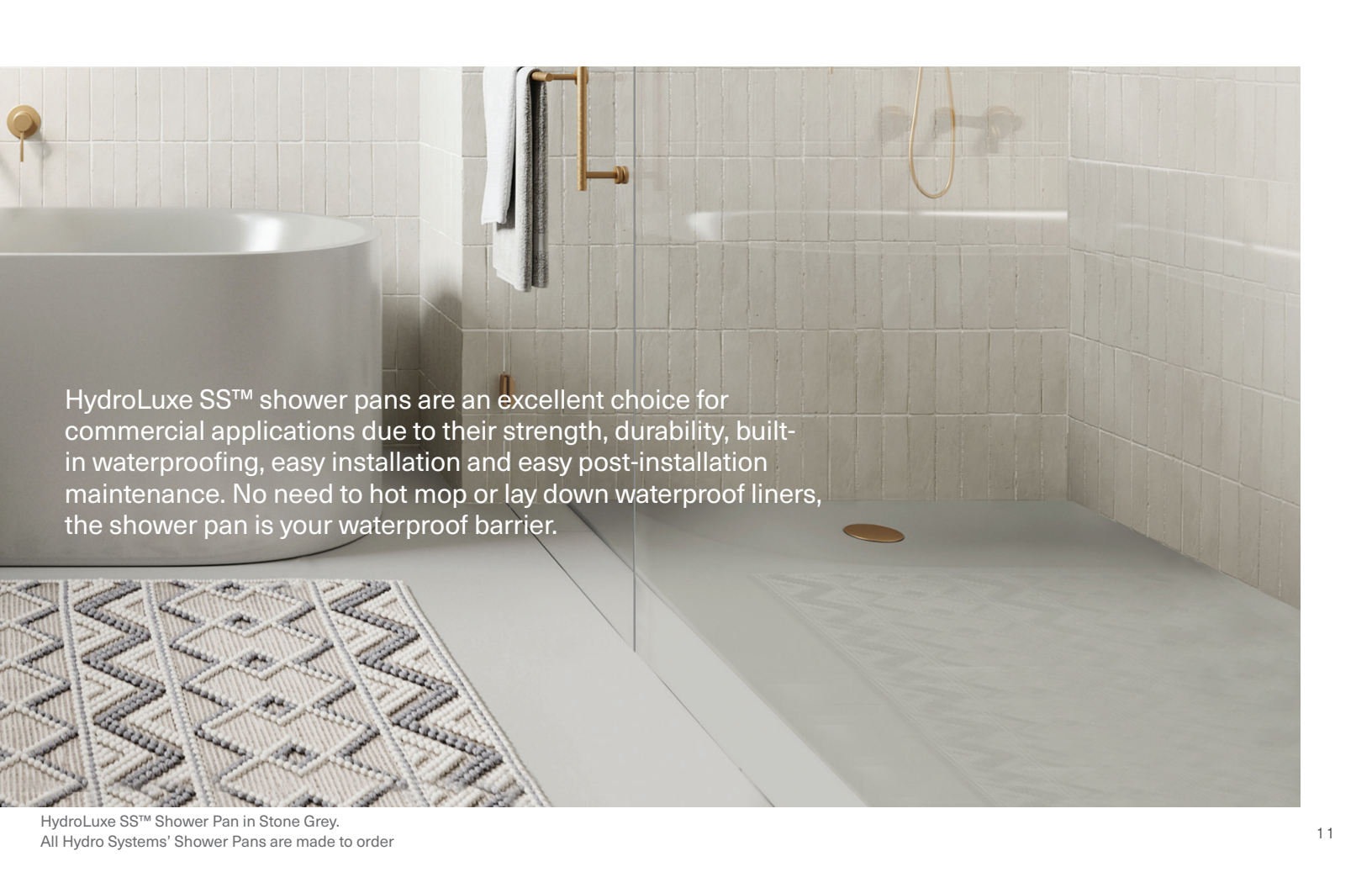
ALL BATHTUBS CAN BE MODIFIED  
TO FIT VIRTUALLY ANY SIZE OR DRAIN  
CONFIGURATION.

Alamo freestanding bathtub in Black Matte 58" x 31" x 21"

# MODIFICATIONS TO FIT ANY SIZE OF ENVIRONMENT OR DRAIN CONFIGURATION.

When it comes to remodeling and retrofits, particularly skilled at developing cost-effective solutions that can meet any type of design constraint in an as-built environment – whether it's modifying the size or shape of a bathtub, moving drain locations or creating deck mount towers with access panels to make installation easier. With Hydro Systems, hospitality designers and property owners will never have to choose between design quality and cost to meet their project specifications.





HydroLuxe SS™ shower pans are an excellent choice for commercial applications due to their strength, durability, built-in waterproofing, easy installation and easy post-installation maintenance. No need to hot mop or lay down waterproof liners, the shower pan is your waterproof barrier.

HydroLuxe SS™ Shower Pan in Stone Grey.  
All Hydro Systems' Shower Pans are made to order

# ENDLESS CHOICES, BESPOKE SOLUTIONS

Specify any size, shape, material, color, drain location or hydrotherapy option for your project.

## INSTALL TYPE

Alcove  
Drop-in  
Freestanding



## SHAPE

Oval  
Rectangular  
Round  
Corner



## MATERIAL

**Acrylic**  
US-Sourced and extra thick for structural integrity and stability

**HydroLuxe SS™**  
Proprietary solid surface blend creating a seamless, durable foundation.



## COLOR

**Acrylic colors:** white, biscuit, bone, sterling silver, black

**HydroLuxe SS™ colors:** 15 in-stock colors or match any custom color

**HydroLuxe SS™ finishes:**  
Matte, Polished, Matte/Gloss,  
Polished Nickel

Two-color option available for  
HydroLuxe SS™

Hydro Systems can match virtually  
any color including RAL and Pantone

## MICRO MOUNT

Micro Mount reduces the  
standard lip height of your tub  
to minus (+) 3/8" to 5/8"



**RAL** **PANTONE**



## CUSTOM OPTIONS

- Custom mold
- Odd shape or size of tub
- Off-center drain
- Unique drain accommodations
- Moving drains or reconfiguring drain locations
- Non-traditional tile flange location
- Custom pump locations

## SOLID CONSTRUCTION

Installation is fast and easy with Hydro Systems' integrally encapsulated level support platform for acrylic alcove and drop-in models

## RIGID PIPE CONSTRUCTION

Hygienically safe, self-draining whirlpool systems, constructed of 100% rigid PVC pipe, prevent bacterial growth due to mildew, algae and other germ laden problems for acrylic alcove and drop in models

## STANDARD SAFETY FEATURES

Slip resistant bottoms and antivortex safety suction covers

Hydrozone, standard on all thermal air systems and whirlpool systems keep water clean

All Hydro Systems' tubs are manufactured in accordance with the appropriate IAPMO and UL requirements, where applicable. In addition, Hydro Systems tubs are manufactured in accordance with the Massachusetts State Building Code - 780 CMR



ADA Compliant

## HYDROTHERAPY OPTIONS



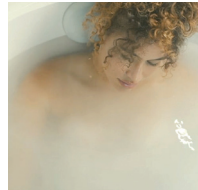
### Cold Plunge

Revitalizing cold hydrotherapy into a traditional tub



### Thermal Air

Tiny bubbles into the bathwater and offers untold relaxing benefits, similar to Swedish massage



### Hydro Indulge

A concentrated dose of oxygen-rich molecules cleanse and restore skin



### Whirlpool Massaging Jets

Flexibility to customize jet location, quantity of jets and type of jet therapy



### Advanced UV system

Ozone and UV light helps to disinfect the water and keep it clean



### Chromatherapy

Digitally controlled, multicolored lighting feature LED lighting system



### Hydro Fusion

Totally silent operation maintains ideal temperature without adding hot water constantly

# ENDLESS CHOICES, BESPOKE SOLUTIONS

Specify any size, shape, material, color, drain location or hydrotherapy option for your project.

## SHOWER PANS

### SHAPE

Rectangular  
Square  
Corner  
Universal (custom shape)



### DRAIN

Round  
Square  
Trench

## MATERIAL

### Acrylic

US-Sourced and extra thick for structural integrity and stability

### HydroLuxe SS™

Proprietary solid surface blend creating a seamless, durable foundation.

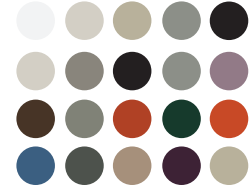


## COLOR

**Acrylic colors:** white, biscuit, bone, sterling silver, black

### HydroLuxe SS™ colors:

15 in-stock colors or match any custom color



Hydro Systems can match virtually any color including RAL and Pantone



PANTONE®

## OTHER FEATURES

Slip resistant bottom

Wheelchair accessible  
models available

Integral tile flange for easy  
water-proof installation

## CUSTOM OPTIONS

Custom mold (acrylic or solid surface)

Odd shape or size of pan

Off-center drain

Custom drain location



## UNIVERSAL SHOWER PAN

Universal Shower Pans are made from an innovative material called HydroLuxe SS™ which is a blend of natural minerals and the best in man-made composites. Due to the process it undergoes from liquid to solid, it can be molded into any shape and size, and results in a 100% solid, non porous surface that acts as a deterrent for bacteria, mold and mildew, is resistant to scratches and stains, and is highly durable. Since it acts as a waterproof barrier, there is no need to waterproof the subfloor before installation, saving time and money.



# PROJECT PORTFOLIO

Hydro Systems products have brought reliability, peace of mind and cost-savings to some of today's most respected brands in the hospitality, multi-housing and commercial sectors.



## **HYATT CENTRIC HOTEL Honolulu, HI**

Soho freestanding bathtub, Metro Collection

The Soho freestanding bathtub was specifically designed for the Hyatt Centric to accommodate smaller bath space dimensions.



## **ARIA HOTEL & CASINO Las Vegas, NV**

Casey freestanding bathtub, Designer Collection

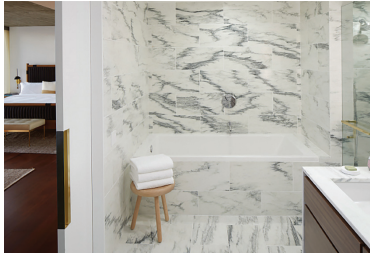
Hydro Systems took the existing design of the Galaxie tub and created a freestanding version, the Casey. Custom-trimmed tub skirts also provided easier access through the existing cabinetry to the tub's thermal air system.



**100 BARROW ST – PRIVATE RESIDENCES**  
**WEST VILLAGE MANHATTAN**  
**New York, NY**

Lacey bathtub, Designer Collection

In this sought-after West Village co-op, the Lacey rectangle bathtub and its linear integral drain system, plus over 15 sizing options allowed endless versatility for the 2- to 4- bedroom residences.



**1 HOTEL (FORMERLY THE JEREMY)**  
**West Hollywood, CA**

Lacey bathtub, Designer Collection

The clean lines of Hydro Systems' Lacey rectangle bathtub provided the right dose of modernity and calm for the five-star suites at the 1 Hotel, which debuted on the Sunset Strip in 2017 under the name "The Jeremy."



**RESORT WORLD**  
**Las Vegas, NV**

Alamo freestanding bathtub, Metro Collection

To solve the challenge of inconsistent drain locations in the hotel, Hydro Systems created a freestanding tub with enough space underneath to connect the tub to any drain location. Custom-fit towers were also added to allow for seamless deck-mounted faucet installation

Hydro Systems can be found in hotels and multi-housing across the United States

- HYATT HOTELS
- GOLDEN NUGGET HOTEL
- SHERATON HOTELS
- ARIA HOTEL
- BELLAGIO HOTEL
- RESORT WORLD
- HILTON
- HOTELS & RESORTS
- FOUR SEASONS
- HOTELS & RESORTS
- MARRIOTT
- HOTELS & RESORTS
- W HOTELS WORLDWIDE
- STANDARD HOTELS
- KIMPTON HOTELS
- ECHO AVENTURA
- LENNAR HOMES
- DR HORTON
- PARDEE HOMES
- SHEA HOMES
- JOHN LAING HOMES
- SHEFFIELD HOMES



**SHERATON WAIKIKI HOTEL**  
**Honolulu, HI**

Citrine bathtub, Ston Collection

The Citrine model was created specifically to accommodate the hotel's existing drain location, while increasing the width of the tub to allow for a better bathing experience. As a result, there was no need to adjust the drain in the concrete slab, and significant labor costs were saved.



**ECHO AVENTURA**  
**Aventura, FL**

Newbury freestanding bathtub, Designer Collection

The designer on this project wanted a freestanding tub with a particular look, feel and size requirement to fit with the aesthetics and flow of the building design. The design and creation of the Newbury was created for this luxury condominium project.



**BELLAGIO HOTEL**  
**Las Vegas, NV**

Atlantia whirlpool bathtub, Designer Collection

The Atlantia was specifically designed to accommodate a drop-in tub with a whirlpool system and specific dimensions for the Bellagio third floor villas.





**H | S**  
HYDRO SYSTEMS

**Headquarters**  
29132 Avenue Paine  
Valencia, CA 91355

**Manufacturing Facility**  
385 Highway 155 South  
McDonough, GA 30253

**Technical Support**  
[support@hydrosystem.com](mailto:support@hydrosystem.com)

**Projects Department**  
[projects@hydrosystem.com](mailto:projects@hydrosystem.com)

**General Information**  
[info@hydrosystem.com](mailto:info@hydrosystem.com)

**Phone:** 661-775-0686  
[www.trade.hydrosystem.com](http://www.trade.hydrosystem.com)