

3300 Series

Testing Systems







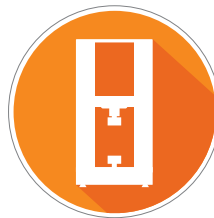
With over **70 YEARS** of materials testing experience, Instron® delivers impactful innovations to enable our users business to thrive. We are committed to delivering services which delight and usability improvements throughout the lifetime of the system.



1500+ Employees
A highly-educated, experienced, and diverse workforce



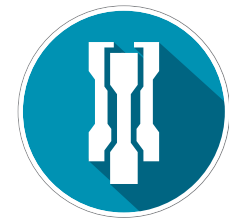
Representing **160 Countries**, speaking **40+ languages**



50,000+ systems installed worldwide



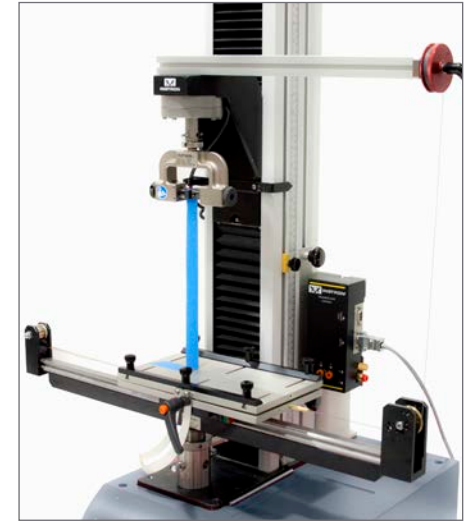
70+ years of engineering and manufacturing testing systems



Diverse product range for nearly all global markets and industries

SOLUTIONS FOR YOUR TEST

Application Based Testing Solutions



Instron® offers a wide variety of solutions to fit your test requirements in almost any application or industry: plastics, metals, elastomers, films, textiles, biomedical, automotive components, electronics, and more.

For more up-to-date information on your specific application, visit Testing Solutions at www.instron.com.



Mid-Range Testing Systems

Dual Column Tabletop Models Available:
5kN, 10kN, 30kN, 50kN Capacity



High-Capacity Testing Systems

Dual Column Floor Models Available:
100kN Capacity



Low-Force Testing Systems

Single Column Tabletop Models Available:
500N, 1kN, 2kN, 5kN Capacity

ACCESSORIES THAT FIT YOUR APPLICATION

Grips, Fixtures, and Accessories



Compression Platens



Cord & Yarn Grips



Bend Fixture



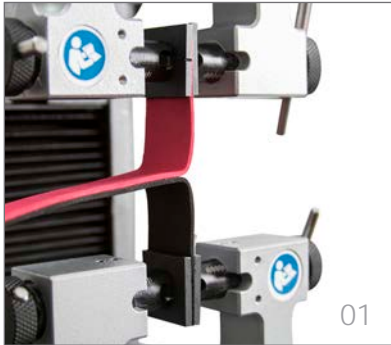
Pneumatic Grips



Screw Action Grips



Wedge Grips



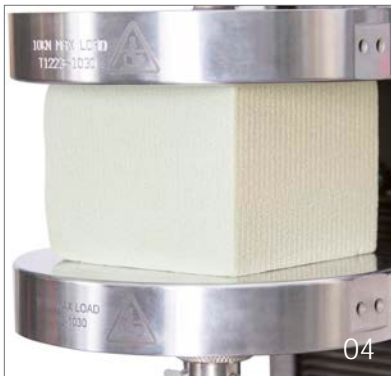
01



02



03



04



05



06

- 01 Screw Side Action Grips
- 02 Wedge Grips, Clip-On Extensometer
- 03 Pneumatic Side Action Grips
- 04 Compression Platens
- 05 Cord and Wire Capstan Grips
- 06 Long Travel Extensometer, Self Tightening Roller Grips

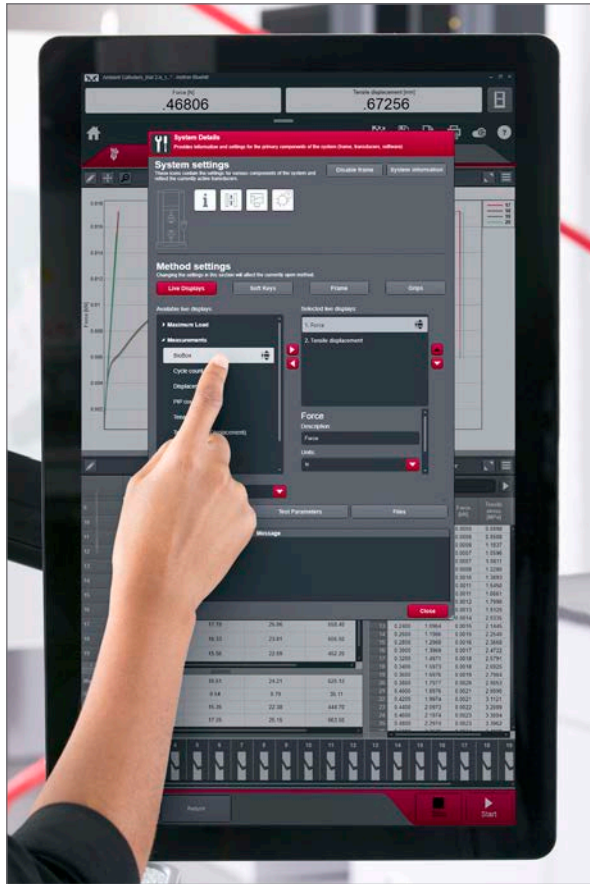


BLUEHILL® UNIVERSAL

Simpler. Smarter. Safer.

Bluehill Universal was built from the ground-up for touch interaction. The new portrait layout, with its meticulously crafted visual design, gives the most comprehensive view of the test workspace on the Operator Dashboard, a stunning large-format touch monitor with an integrated controller.

Bluehill Universal's large touchpoints and intuitive gestures make the user experience simpler and smarter. Easy-to-understand icons and workflows make it easy to train new or experienced users, simplifying operator training, and allowing you to start testing even faster.



Effortless Workflows

An easy-to-use touch interface, built from the ground up with ergonomics in mind, optimizes your testing workflow.




Increased Efficiency

Console functions and numerical keypads are conveniently located and accessible, making your testing faster and easier.



Advanced Capability

Powerful Bluehill® architecture gives you complete control over how you set up test methods, allowing you to achieve optimal results.


Instron® Connect
 Contact Instron for assistance with your system, schedule verifications, and receive software updates.

Message center

ID	Time	Message
300	2/20/2017 09:12:33	Verifications are currently up to date.
200	2/20/2017 09:12:33	Software is currently up to date.
105	2/20/2017 09:12:33	Successfully connected to Instron® Connect.

Submit request

Upload files

Schedule verifications

Submit request

First name:

Last name:

Phone number:

Email address:

Message:

Submit

System status

System ID:



Instron® Connect

Instron's unrivaled application expertise and best-in-class service establishes us as the leader in customer satisfaction with the best ownership experience. Instron Connect introduces a powerful communication platform that brings our support engineers even closer to your organization.

QuickTest

For when you need results fast, QuickTest allows you to simply enter a few simple parameters and run your test within seconds.

ATTENTION TO DETAIL

Confidence in your Result



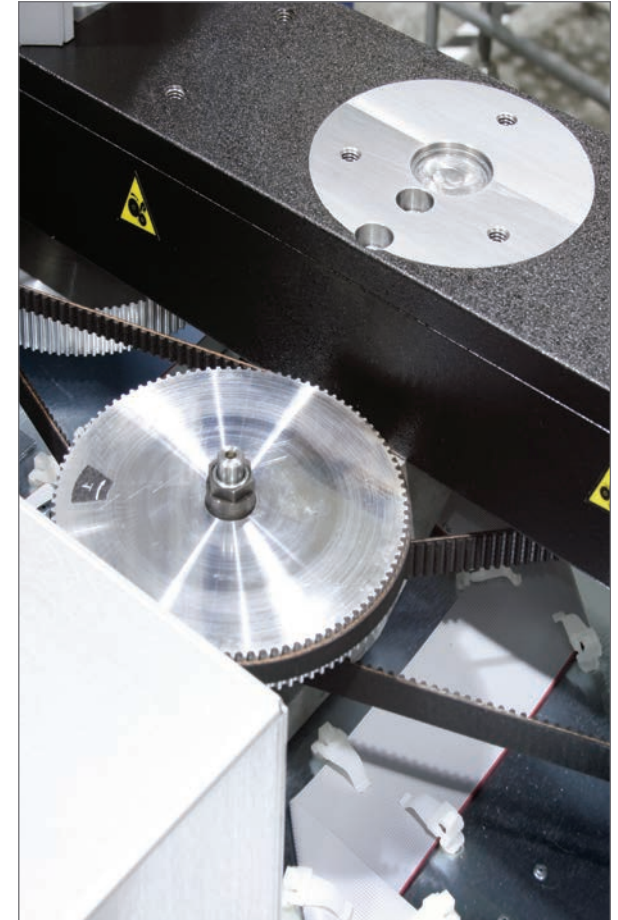
Load Cell Construction

The highest quality mechanical and electrical components ensure the maximum level of performance, producing the most accurate results.



Load-string Alignment

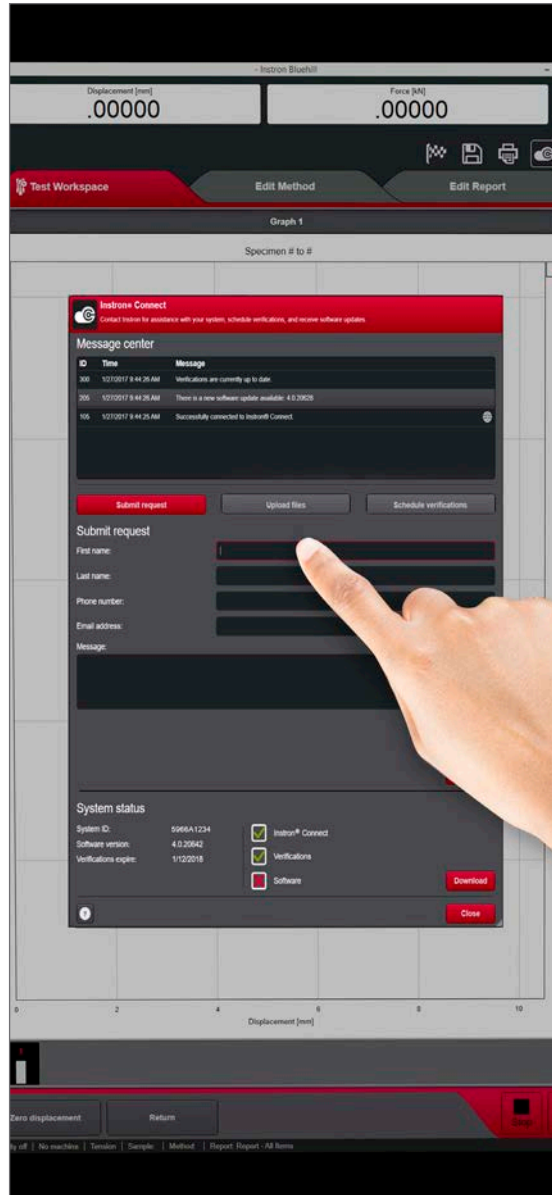
Precision concentricity ring and alignment pins for base adapter and load cell, self-aligning grips, optional specimen centering device.



Machine Integrity

Preloaded ballscrews, precision guidance columns, symmetrical drive system, on-board diagnostics/real-time error checking, ISO 9001 accredited.

| SUPPORT FOR THE LIFE OF YOUR EQUIPMENT



We build more than testing systems,
we build relationships.

Instron's world-class service organization is committed to delivering high-quality calibration, training, preventative maintenance, and technical support throughout the life of your system. Instron Connect, a vital part of Bluehill® Universal Software, provides remote technical support capabilities like screen sharing, file transfer, and verification reminders via the Instron Connect Cloud Server.

Instron® is the largest supplier of materials testing machines in the world. Our reliable testing systems can run 24 hours a day, 7 days a week, 365 days of the year. However, if something does go wrong, or you have a question, we offer a variety of resources to ensure you receive the assistance you need as soon as you need it.



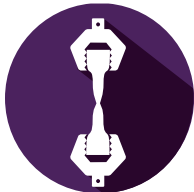
You Can Count on Us

- Represented in more than 160 countries, speaking 40 different languages
- Our on-site and laboratory calibration and verification processes are ISO 17025 accredited throughout Europe, North America, Brazil, Australia, China, Japan, Korea, Singapore, India, Thailand, and Taiwan



Enhanced Technical Support a “Touch” Away

- Instron Connect provides easy remote screen sharing and service request submissions to reduce support times
- Built in verification reminders in Instron Connect minimize risk for delayed certifications
- Instron Connect allows simple test method and file transfers to keep systems up to date
- Expert consultants provide tailored solutions and traditional hotline access anywhere in the world
- Additional services like preventative maintenance, calibration, training, emergency repair, and service parts insure confidence that you can keep systems running and get date in a timely fashion



Stay at the Forefront of Materials Science

- Training courses available on-site or in one of our Regional Training Centers
- Utilize our Applications Engineering Lab or Custom Solutions Group for the latest technological advances in materials testing
- Our state-of-the-art Calibration Laboratory offers a comprehensive range of accredited calibration and verification services complying with ASTM, ISO, and Nadcap standards for: force, speed, strain (extensometers), displacement, impact, temperature, torque, creep, strain gauge channel, alignment, and verification of all CEAST instruments.



Resources at Your Fingertips • www.instron.com

- Our *Testing Solutions* section provides answers to your most current testing challenges
- WSA is a dedicated support website, providing web-based delivery of information specific to your system
- Access to our complete online Accessories catalog

| 3300 SERIES SPECIFICATIONS

Model	Capacity		Minimum Speed		Maximum Speed		Crosshead Travel		Vertical Test Space ¹		Column Spacing		Footprint Dimensions (h × w ² × d)		Size Options Available	
	kN	lbf	mm/min	in/min	mm/min	in/min	mm	in	mm	in	mm	in	cm	in	Extra Height	Extra Width

Single Column Tabletop Models

3342	0.5	113	0.05	0.002	1000	40	482	18.9	651	25.6	100	3.9	90 × 38 × 50	35 × 15 × 20		
3343	1	225	0.05	0.002	1000	40	898	35.2	1067	42.0	100	3.9	130 × 38 × 50	51 × 15 × 20		
3344	2	450	0.05	0.002	1000	40	898	35.2	1067	42.0	100	3.9	130 × 38 × 50	51 × 15 × 20		
3345	5	1125	0.05	0.002	1000	40	885	34.7	1123	44.2	100	3.9	136 × 38 × 50	53 × 15 × 20	•	

Dual Column Tabletop Models

3365	5	1125	0.01	0.0004	1000	40	1122	44.2	1193	47.0	420	16.5	158 × 76 × 71	62 × 30 × 28	•	
3366	10	2250	0.005	0.0002	500	20	1122	44.2	1193	47.0	420	16.5	158 × 76 × 71	62 × 30 × 28	•	
3367	30	6750	0.005	0.0002	500	20	1122	44.2	1193	47.0	420	16.5	158 × 76 × 71	62 × 30 × 28	•	
3369	50	11250	0.005	0.0002	500	20	1122	44.2	1193	47.0	420	16.5	158 × 76 × 71	62 × 30 × 28	•	

Dual Column Floor Model

3382	100	22500	0.005	0.0002	500	20	1235	48.6	1323	52.1	575	22.5	239 × 112 × 78	94 × 44 × 31		
------	-----	-------	-------	--------	-----	----	------	------	------	------	-----	------	----------------	--------------	--	--

Notes:

1. Total vertical test space is the distance from the top surface of the base platen to the bottom surface of the moving crosshead, excluding load cell, grips, and fixtures.
2. This is the system footprint width. The Operator Dashboard monitor may add 300mm (12in) to the overall width of the frame.





INSTRON

2 kN

Instron Bluewin

Test

Quick Test setup

Test control

Test direction:

Test speed:

0.001

Inputs

Sample test input:

No

Specimen test input:

Specimen mode:

Outputs

Print the report:

Save the report:

Export results (CSV):

Export raw data (CSV):

Advanced

System of units:

All

Force (kN)

Displacement (mm)



"True innovation occurs when product designers and developers show relentless curiosity towards the needs of their customers. This builds an understanding that allows them to anticipate and create a new suite of solutions that are Simpler, Smarter, and Safer."

Yahya Gharagozlou

Group President
ITW Test & Measurement
(Instron is an ITW Company)