

RTISYSTEMS

RELIABILITY

BEST PRACTICES

QUALITY

SOLUTIONS

SUPPORT

ASSISTANCE

INTEGRITY

FULFILLMENT

RELATIONSHIP

CARE

In conjunction with our outstanding Security/Surveillance and Live Video Broadcasting services, RTIS also provides these outstanding “Best Practices” services.



- **Exporting** (Reporting & Documentation)
- **Working Deck** (Visual Project Management)
- **Fly Over Restriction Enforcement** (Airspace Use & Trespass)
- **Water Flow Monitoring** (Construction/Domestic & Sprinkler)
- **Wi-Fi Hotspotting** (Ladown Yard, Subterranean & Interior)
- **Site Office Networking** (Internet, LAN & Wi-Fi)
- **Threat Assessment** (Consultation)



Our unique ability to deliver “real-time” 24/7 Security/Surveillance, Live Video Broadcasting, and these Best Practices, along with our immensely successful construction track record with Owners, Developers, General Contractors, Underwriters, Trades, Banks, Lenders, and Investors - makes RTIS a robust partner.

Integrity, Fulfillment, Innovation, Reliability are our core values. Our motto of “Pride in Partnership” is more than mere words. Our high client and strategic partner fulfillment with long standing retention rates illustrates our “Pride in Partnership”.

EXPORTING: REPORTING & DOCUMENTATION

Manual export counts only count the number of trucks. To ensure that each truck has a full load, the counting worker must climb the truck to verify load levels. Of course, this manual process leaves too much to the worker discretion for under counts, over counts, and partial loads.

Timely Exporting is critical to the project plan and budget, for two major reasons.

- 1) **Per Load Contract:** Each truck must have FTL (full truck load), to ensure that what you not paying FTL for LTL (less than loads).
- 2) **Fixed Price Contract:** Each truck must have FTL, to ensure that exporting is completed on or ahead of schedule.

Utilizing HD netOptic camera(s) supported with Video Analytics technology located at the export gate(s) our systems are able to differentiate, capture and count different types of vehicles as they enter and depart the site (supported with time stamps). From this visual audit trail, we are able to provide project management with accurate written "Export Reports", supported with "*real-time*" images for audit/resolution purposes.

With our Exporting solution in place, you now enjoy the benefits of:

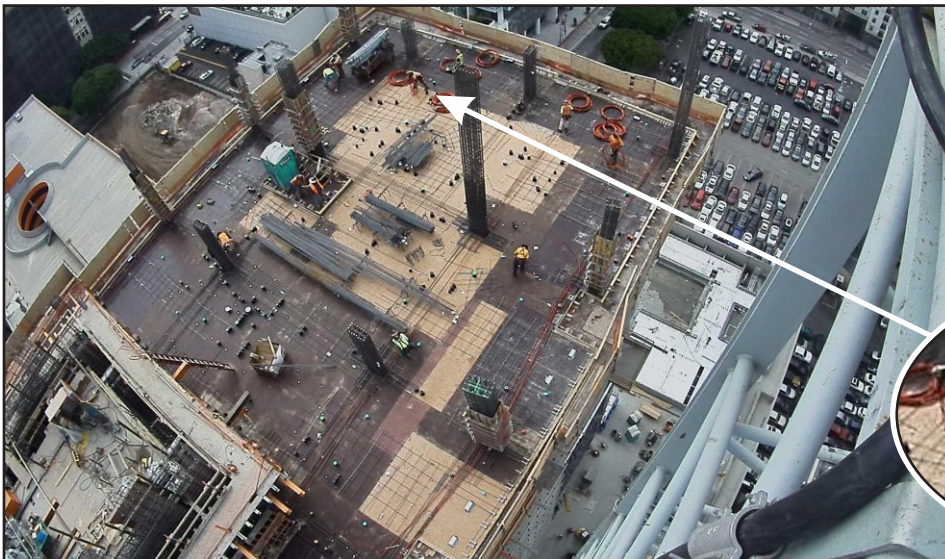
- 1) **Per Load Contract:** The ability to resolve overcharging stemming from inflated exports counts or LTL load) exports.
- 2) **Fixed Price Contract:** The ability to enforce FTL exports, ensuring that exporting is completed on or ahead of schedule. Quicker exporting translates into Mat our Slab formwork and pours on or ahead of schedule.
- 3) **Reduced Labor Costs:** By implementing our Export technology and services, you eliminate the loaded labor cost of manual and inaccurate report counts.



WORKING DECK: VISUAL PROJECT MANAGEMENT

Our Tower Crane Live Video Broadcasting solution is a phenomenal visual project management and a work place safety tool.

The Tower Crane solution has been designed and engineered to accommodate all models of stationary, climbing, crawling, and jib cranes. HD netOptic camera(s) are mounted on the mast - just below the boom/jib. With these netOptic cameras pointing directly downward, on-site resources, corporate executives and staff have astonishing "*live real-time*" views of the mat pour, floor pours and working deck construction activity.



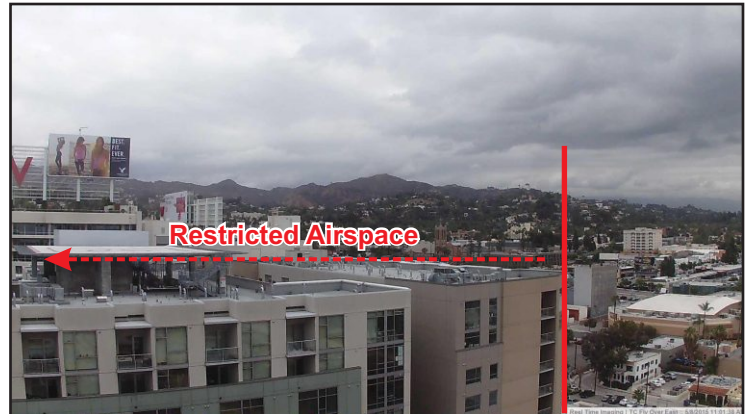
FLYOVER RESTRICTIONS: AIRSPACE USE & TRESPASS

When using a Tower Crane, there may be restrictions placed on the project by various levels of city, municipal or state agencies restricting flying over rail lines, freeways, aircraft approaches, neighboring buildings, etc.

Any time you have flyover restrictions, there are two major areas of concern/contention.

- 1) **Operator Flyover:** From time to time, the crane operator may be distracted and fly over in error.
- 2) **Optical Illusions:** When standing on the ground and looking upwards to the restricted boarder line, your eyes may see that the boom/jib has invaded the airspace when in-fact the operator is within a foot of the restricted boarder.

Using our modified Tower Crane Live Video solution, we have the unique ability to video record, monitor and provide “real-time” text, and email alerts to project management of any invasion into restricted airspace for immediate “real time” video review and remediation. Just as in any sport where there is a questionable call, officials call for a video review, now the project management team and ground observers can review the video free from any optical illusions.



WATER FLOW MONITORING: CONSTRUCTION (domestic) & SPRINKLERS

Every year, millions of gallons of water damage is caused due to catastrophic pipe bursts, and leaks during construction. In the past, developers, GC's and project managers, and property owners have dealt with this water damage through insurance claims and in reactive cleanups.

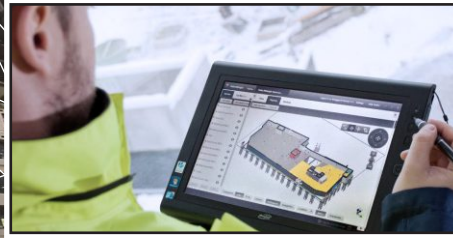
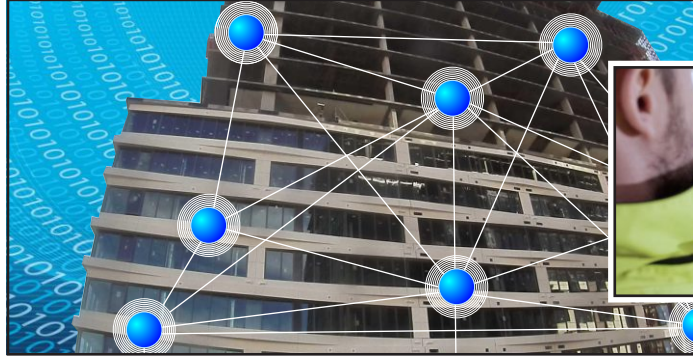


Through “real-time” monitoring of water usage, our wireless detection technology reads the pulses of the meter and sends data immediately for instant analysis and alerts when flow spikes/leaks occur. When afterhours flows are detected, our 24/7 Command & Control Desk immediately notifies the authorities and your assigned resources, based on your waterfall list with the flow rate, and which water line is at issue.



WI-FI HOTSPOTTING: LAYDOWN YARD, SUBTERRANEAN & INTERIOR

Utilizing long range Wireless Access Points strategically mounted in subterranean levels, and on each floor as construction progresses, authorized users are now able to connect in “real-time” from laptops & tablets to the Wi-Fi network for VPN connectivity to their respective corporate network(s) or



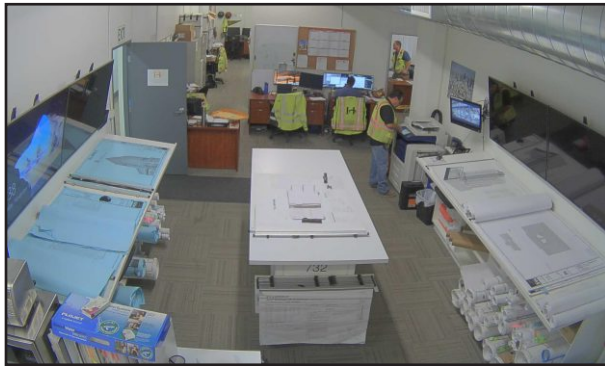
other applications (such as Bluebeam & Procore) for document control, submittals, RFI and punch process.



In addition, cellular calls (no boosters needed) are able to connect through these same Hotspots.

SITE OFFICE: INTERNET, LAN & WI-FI

As IT professionals, many contractors engage us to install hard wired & wireless internet and network infrastructure throughout their site office (trailer or building).



These same contractors also have a security cameras install in an effort to secure costly office equipment such as desktops, laptops, wide format printers, etc.

Most construction offices are now fitted out with large screen HD Tv's in a board/meeting room. Because of this, we have the capability of displaying all site netOptic cameras on screen in live “real-time” and historical archival imagery.

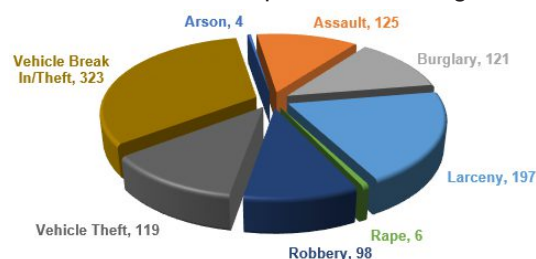
THREAT ASSESSMENT: CONSULTATION

During our engagement on your project, we are continually on property carrying out “threat assessments”.

Threat Assessments involve accurately identifying and characterizing potential attacks upon the project in order to better understand the risks and facilitate risk management. We are in constant contact with law enforcement reviewing crime statistics and developing trend models. The illustrated pie chart represents actual reported crime for the past 5 months, all within a 1/4-mile radius of an actual project.

“The earlier you identify issues, the easier it is to fix them”

Our threat modeling is a procedure for optimizing project security by identifying objectives and vulnerabilities, and then defining countermeasures to prevent, or mitigate the effects of, threat to the project.



In this context, a threat is a potential or actual adverse event that may be malicious or incidental, that can compromise the assets of the project.

